

Strategic Insights

A newsletter bridging industry,
alumni and academia at M State

2025 February Vol. 2, Issue 2

M State
Alumni



Thursday,
April 3

Raise a glass for M State Alumni at Pint Night in Detroit Lakes

Join M State Foundation and Alumni for a charitable Pint Night at Bucks Mill Brewing on Thursday, April 3, from 5:30-7:30 p.m. M State alumni are invited to reconnect and reminisce with fellow graduates while raising money for a good cause. For every pint sold, Bucks Mill will donate \$1.50 to the M State Alumni Scholarship fund.

As Alumni Committee Chair and proud M State Graphic Design alum, Chloe Wessler, says, "Pint Night is more than a great time. It's a wonderful opportunity to come together as a community, support our future leaders, and share some great memories."

Bucks Mill Brewing is located at 824 Washington Avenue in Detroit Lakes.

Quick Links

[Corporate Engagement Program](#)

[Career Services](#)

[M State Foundation and Alumni](#)

[Fergus Area College Foundation](#)

[Small Business Development Center](#)

[Workforce Development Solutions](#)

As M State Foundation moves forward with this new identity, the organization is excited to strengthen its connections with alumni, donors and supporters. This fresh image will help the foundation tell the story of how donor contributions are transforming lives and fostering educational excellence.

M State Foundation and Alumni is a 501c3 nonprofit organization that supports the college's campuses in Detroit Lakes, Moorhead and Wadena.

Customize your trainings with Workforce Development Solutions

We work with your company to develop custom training that works for you. Your preferred schedule. Your chosen location. Your unique needs.

For more than 20 years, Minnesota State Community and Technical College (M State) has been supporting businesses and industries throughout the region with custom-designed skills and technology training that meets their unique needs. M State's Workforce Development Solutions (WDS) delivers more than 100,000 hours of training to more than 9,000 professionals each year. We make training convenient by offering it on-site, online or on our campuses in Detroit Lakes, Fergus Falls, Moorhead and Wadena.

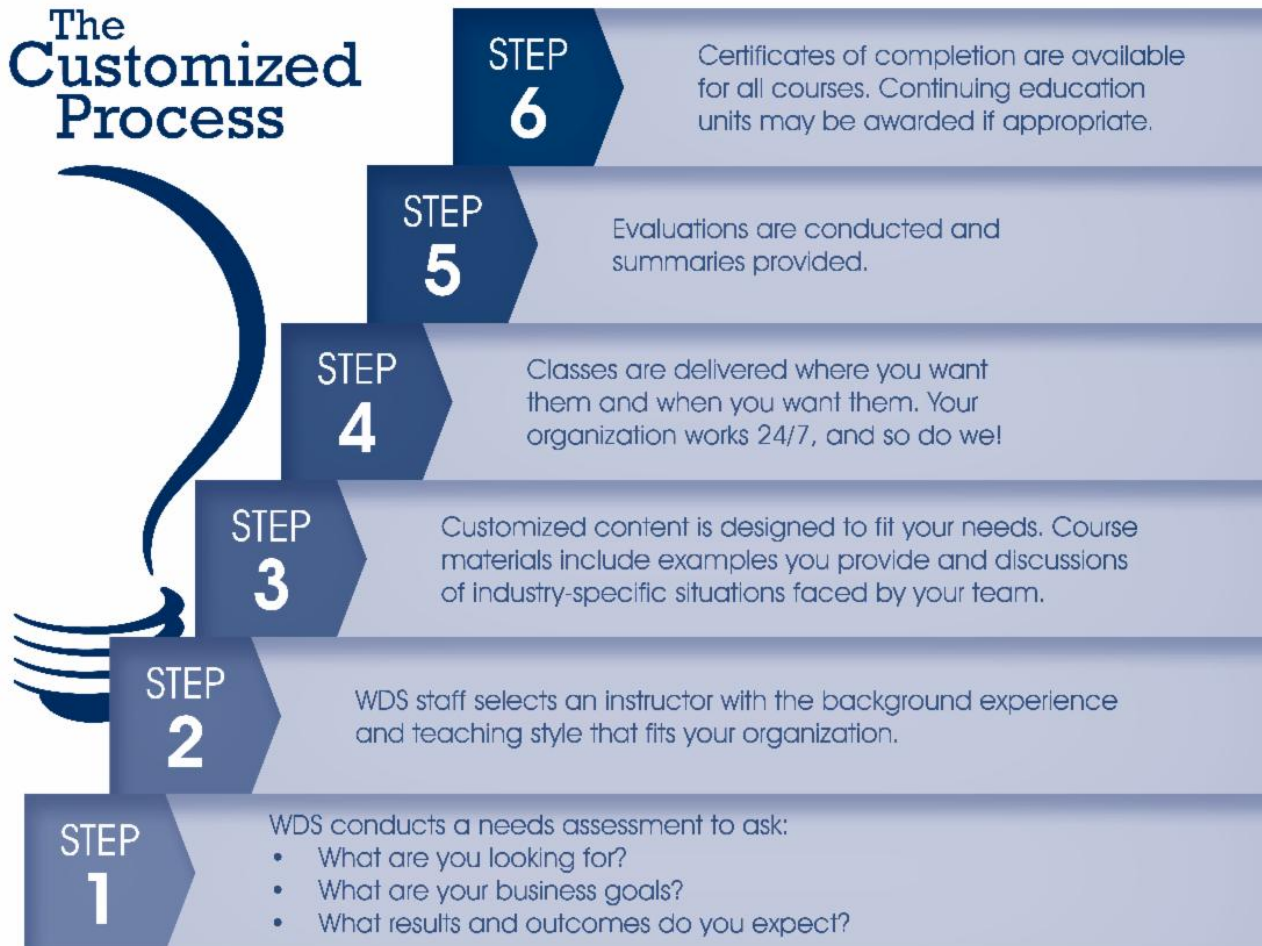
More than 500 companies have hired us for hour-based training that focuses on specific training or production needs and for credit courses that help prepare workers for new responsibilities and advancement.



Training we provide at Workforce Development Solutions

- Business Technology
- Electrical
- Fire and EMS
- Healthcare
- Leadership Development
- Mechanical/Technical
- Safety and Compliance
- Specialized Trainings
- Transportation

The Customized Process



SHARE YOUR PASSION AND GET PAID

Be a Trainer for Workforce Development at M State

CLASS-BASED TRAINING

Provide custom-designed trainings on-site at client facilities, online, or at one of M State's campuses in Detroit Lakes, Fergus Falls, Moorhead and Wadena. Training groups average about 20 people each.

COMPENSATION

Get paid by the hour, including training hours, development hours and one-way travel time when travel and travel expenses are required. Hourly rates vary depending on the training topic.

FLEXIBLE HOURS

Work as often or as little as you want. Make training your side hustle, or make it something more.

GROWTH POTENTIAL

Grow and expand your career, maximize your potential and achieve your professional goals. Being a trainer means you have options to pursue coaching and training certifications as well as opportunities to build facilitation, communication and technical skills.

NETWORKING

Work with a broad range of employers and employees in your field of expertise, from all across our west central Minnesota training area.



Ready to share your skills? Contact:
Amy Hochgraber, Director of Business and Industry
amy.hochgraber@minnesota.edu | [218.846.3766](tel:218.846.3766)

minnesota.edu • 877.450.3322



MINNESOTA STATE

*Minnesota State Community and Technical College,
a member of Minnesota State, is an affirmative action,
equal opportunity educator and employer.*



Minnesota State
Community and Technical College

Minnesota State Community and Technical College | 1414 College Way | Fergus Falls, MN 56537
US

[Unsubscribe](#) | [Update Profile](#) | [Constant Contact Data Notice](#)



Try email marketing for free today!